

# NO-COAT®

## DRYWALL CORNER



### Pre-Cut Drywall Corner Beads Provide Superior Strength and Durability



Made With  
**SLAM**  
TECHNOLOGY.

NO-COAT® mud applied, easy-to-install stick lengths deliver perfect corners in record time.

- High-strength, tapered copolymer core.
- Severe impact resistance, will not dent.
- Corners will not separate from wall.
- Crisp sharp lines without ridges.
- Withstands significant shifting due to lumber drying, settling, humidity and temperature differences.
- Surface paper is perfect for applying paint and textures.
- SLAM corner design ensures strength, durability, labour savings and eliminates costly callbacks.

#### PRODUCT DATA

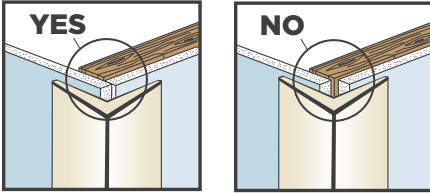
PRODUCT	CERTAINTEED CODE	PACKAGE SIZE
NO-COAT Outside 90° - 8'	640665	50 Sticks / Carton
NO-COAT Outside 90° - 9'	640666	50 Sticks / Carton
NO-COAT Outside 90° - 10'	640667	50 Sticks / Carton
NO-COAT Outside 90° - 12'	640668	50 Sticks / Carton
NO-COAT Inside 90° - 8'	640661	50 Sticks / Carton
NO-COAT Inside 90° - 9'	640662	50 Sticks / Carton
NO-COAT Inside 90° - 10'	640663	50 Sticks / Carton
NO-COAT Bullnose 3/8" - 8'	639613	50 Sticks / Carton
NO-COAT Bullnose 3/8" - 9'	639614	50 Sticks / Carton
NO-COAT Bullnose 3/8" - 10'	639615	50 Sticks / Carton
NO-COAT Bullnose 3/4" - 8'	640657	50 Sticks / Carton
NO-COAT Bullnose 3/4" - 9'	640658	50 Sticks / Carton
NO-COAT Bullnose 3/4" - 10'	640659	50 Sticks / Carton
NO-COAT L-Trim 1/2" - 10'	640670	50 Sticks / Carton
NO-COAT L-Trim 5/8" - 10'	640671	50 Sticks / Carton
NO-COAT Arch 3/4" Bullnose - 10'	639612	10 Sticks / Carton
NO-COAT Arch Outside 90° - 10'	640655	10 Sticks / Carton

Custom lengths may be available on special order.  
Consult your CertainTeed sales representative.

**CertainTeed**  
SAINT-GOBAIN

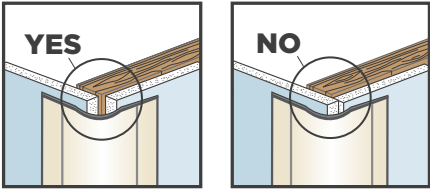
### OUTSIDE 90

When installing drywall for Outside 90 corners, hang as shown. Ensure that the drywall at the corners touch, do not leave a gap.



### BULLNOSE

When installing drywall for Bullnose corners, hang as shown. Create an open area for the radius of the bead, ensure that drywall at the corners **do not** touch.

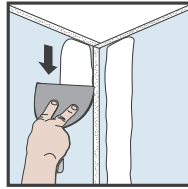


### CERTAINTED DOUBLE BARREL HOPPER®

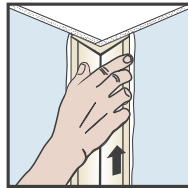
For use with NO-COAT inside, outside and bullnose corners and flexible corner rolls. Accommodates all inside and outside angle without time-consuming part changeovers and reconfiguration.



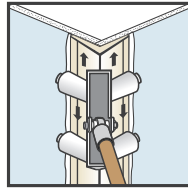
### OUTSIDE 90 AND BULLNOSE



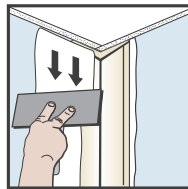
1. Using the tapping knife, apply joint compound to drywall, slightly beyond where the edge of the corner will be. Or use hopper to fill bead.



2. Place corner trim on wall, ensuring it is aligned tightly to the ceiling. Press into position.

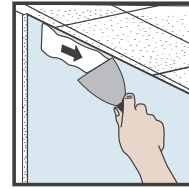


3. Use the roller to embed the trim. Or embed using even pressure, running the knife over it at a 45° angle. Use the tapping knife to skim over the edge with joint compound. Let dry thoroughly.

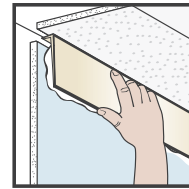


4. Use the wider finishing knife to skim over the edge again. Let dry thoroughly. Lightly sand and paint.

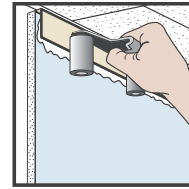
### L-TRIM



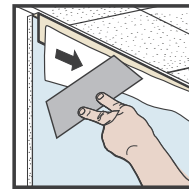
1. Use the tapping knife to apply joint compound to drywall, slightly beyond where the L-Trim will be. Or use hopper to fill bead.



2. Place L-Trim on wall. Press into position



3. Use the roller to embed the trim or embed with a knife, using even pressure running at a 45° angle. Use the tapping knife to skim over the L-Trim edge with joint compound. Let dry thoroughly.



4. Use the wider finishing knife to skim over the L-Trim edge again. Let dry thoroughly. Lightly sand and paint

USGBC® and the related logo are trademarks owned by the U.S. Green Building Council® and are used with permission.



The Health Product Declaration® logo is a trademark or service mark of Health Product Declaration Collaborative, Inc., in the United States and in other countries and is being used herein under license.

