



Vertically installed, unframed baffles provide sound absorption and design flexibility.

**FEATURES AND BENEFITS**

- Reduces excess noise to help create a more productive work environment in open spaces
- Frameless panels with fully painted edges enable two-sided sound absorption
- Create a multitude of contemporary looks with three different edge treatments: straight, wave, and zig zag
- Highly engineered Akutex™ FT surface in white finish has nearly perfect light diffusion (+99%)
- Multiple attachment options available; baffles are demountable
- Available in 22 standard colors

**ATTRIBUTES**



**SAG  
RESISTANT**



**FIRE RATING:  
CLASS A**



**MOLD/MILDEW  
RESISTANT**



**WASHABLE**



**LR 0.85**

**SOLO FREEDOM**

Ecophon Solo Freedom enables endless design possibilities. Design almost any shape based on a 1200 x 1200, 2400 x 1200, or 3000 x 1200 panel. Quick-ship options available for select Solo Cloud and Baffle shapes.

**LEED® v4**

RECYCLED CONTENT	54%	
	PRE: 0%	POST: 54%

- ✓ EQ: Optimize Energy Performance
- ✓ EA: Prereq. Min. Energy Performance
- ✓ EQ: Interior Lighting
- ✓ MR: PBT Source Reduction (Healthcare)
- ✓ EQ: Acoustic Performance
- ✓ EQ: Daylight
- ✓ MR: Sourcing Raw Materials
- ✓ MR: Environmental Product Declarations (EPDs)
- ✓ MR: Construction and Demolition Waste Management Planning
- ✓ MR: Material Ingredients (HPDs)

LEED® is a registered trademark of the U.S. Green Building Council.

**CERTIFICATIONS & PRODUCT DECLARATIONS**



EPD AVAILABLE

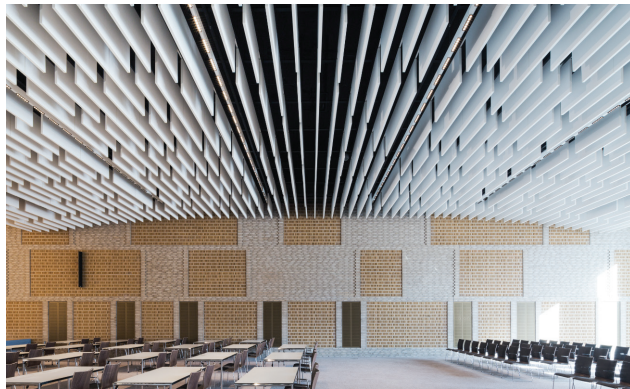


HPD AVAILABLE

**COLORS**



**CONFIGURATION SUGGESTIONS**



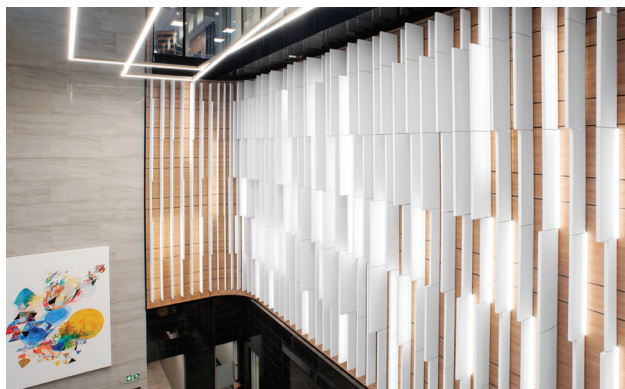
**STAGGER THEM**

Stagger baffles at varying intervals to create movement with unique angular or wave-like expressions.



**MAKE WAVES**

Achieve unique, angular, or flowing visuals across the ceiling plane by hanging standard wave and zig-zag baffles at varying intervals, creating a feeling of movement across the space.



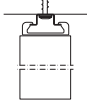
**GO VERTICAL**

Break into a new visual plane — The Baffle Wall Fixing Accessory allows you to hang baffles on walls. Create stacked or staggered formations for unconventional visual effect on vertical surfaces.

# ECOPHON® SOLO™ BAFFLES

## SOLO BAFFLE ANCHOR

For direct attachment applications.



DIMENSIONS (IN.)	AVG SABINS/UNIT	PIECES/CARTON	LBS./CARTON
------------------	-----------------	---------------	-------------

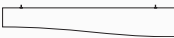
### RECTANGLE



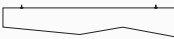
3544 10110 EZC	5 x 46 x 1-1/2	1.6	10	52
3544 10111 EZC	5 x 94 x 1-1/2	3.3	10	52
3544 10112 EZC	10 x 46 x 1-1/2	3.3	10	52
3544 10113 EZC	10 x 94 x 1-1/2	6.7	6	52
3544 10114 EZC	16 x 94 x 1-1/2	10.7	4	52
3544 10115 EZC	22 x 46 x 1-1/2	7.2	4	52
3544 10116 EZC	22 x 94 x 1-1/2	14.7	4	52
3544 10117 EZC	28 x 46 x 1-1/2	9.2	2	52
3544 10118 EZC	28 x 94 x 1-1/2	18.7	2	52

	DIMENSIONS MM(= IN.)	AVG SABINS/UNIT	PIECES/CARTON	LBS./CARTON
3544 2101	200 x 1200 x 40 (= 8 x 48 x 1-1/2)	3.2	10	23
3544 2100	300 x 1200 x 40 (= 12 x 48 x 1-1/2)	3.5	10	34
3544 2104	600 x 1200 x 40 (= 24 x 48 x 1-1/2)	7.1	5	34
3544 7570	200 x 1800 x 40 (= 8 x 72 x 1-1/2)	5.4	8	36
3544 6739	300 x 1800 x 40 (= 12 x 72 x 1-1/2)	5.9	8	50
3544 7849	600 x 1800 x 40 (= 24 x 72 x 1-1/2)	8.1	4	50

	DIMENSIONS MM(= IN.)	AVG SABINS/UNIT	PIECES/CARTON	LBS./CARTON
--	----------------------	-----------------	---------------	-------------

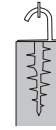
WAVE					
	3544 8101	300 x 1800 x 40 (= 12 x 72 x 1-1/2)	5.9	4	30
	3544 8100	600 x 1800 x 40 (= 24 x 72 x 1-1/2)	7.8	4	50

	DIMENSIONS MM(= IN.)	AVG SABINS/UNIT	PIECES/CARTON	LBS./CARTON
--	----------------------	-----------------	---------------	-------------

ZIG ZAG					
	3544 8001	300 x 1800 x 40 (= 12 x 72 x 1-1/2)	5.7	4	30
	3544 8000	600 x 1800 x 40 (= 24 x 72 x 1-1/2)	7.8	4	51

## SOLO BAFFLE HOOK

For adjustable hanging applications from plenum or suspended ceilings.



DIMENSIONS (IN.)	AVG SABINS/UNIT	PIECES/CARTON	LBS./CARTON
------------------	-----------------	---------------	-------------

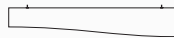
### RECTANGLE




3544 10119 EZC	5 x 46 x 1-1/2	1.6	10	52
3544 10120 EZC	5 x 94 x 1-1/2	3.3	10	52
3544 10121 EZC	10 x 46 x 1-1/2	3.3	10	52
3544 10122 EZC	10 x 94 x 1-1/2	6.7	6	52
3544 10123 EZC	16 x 94 x 1-1/2	10.7	4	52
3544 10124 EZC	22 x 46 x 1-1/2	7.2	4	52
3544 10125 EZC	22 x 94 x 1-1/2	14.7	4	52
3544 10126 EZC	28 x 46 x 1-1/2	9.2	2	52
3544 10127 EZC	28 x 94 x 1-1/2	18.7	2	52

	DIMENSIONS MM(= IN.)	AVG SABINS/UNIT	PIECES/CARTON	LBS./CARTON
3544 2619	200 x 1200 x 40 (= 8 x 48 x 1-1/2)	3.2	10	23
3544 2090	300 x 1200 x 40 (= 12 x 48 x 1-1/2)	3.5	10	34
3544 2632	600 x 1200 x 40 (= 24 x 48 x 1-1/2)	7.1	5	34
3544 7852	200 x 1800 x 40 (= 8 x 72 x 1-1/2)	5.4	8	36
3544 7851	300 x 1800 x 40 (= 12 x 72 x 1-1/2)	5.9	8	50
3544 7850	600 x 1800 x 40 (= 24 x 72 x 1-1/2)	8.1	4	50

	DIMENSIONS MM(= IN.)	AVG SABINS/UNIT	PIECES/CARTON	LBS./CARTON
--	----------------------	-----------------	---------------	-------------

WAVE					
	3544 8105	300 x 1800 x 40 (= 12 x 72 x 1-1/2)	5.9	4	30
	3544 8104	600 x 1800 x 40 (= 24 x 72 x 1-1/2)	7.8	4	50

	DIMENSIONS MM(= IN.)	AVG SABINS/UNIT	PIECES/CARTON	LBS./CARTON
--	----------------------	-----------------	---------------	-------------

ZIG ZAG					
	3544 8005	300 x 1800 x 40 (= 12 x 72 x 1-1/2)	5.7	4	30
	3544 8004	600 x 1800 x 40 (= 24 x 72 x 1-1/2)	7.8	4	51

CAN'T FIND A SIZE? Contact your local Sales Representative or call 800-233-8990.

\*# of Hooks/Anchors per panel:  
2 per panel when panel is up to 1600mm in length  
3 per panel when panel is 1601mm or longer

## ACCESSORIES

SOLO™ BAFFLE	PRODUCT NAME	PIECES/ CARTON	USE
2630 0691	Connect Edge Sealant White*	1	For re-sealing cut edges (typically 100-150 lf/container); 1 liter container
2630 1201	Connect Baffle Clip	100	For attaching Solo Baffle Hook panels to acoustical ceiling grid
2631 1271	Connect Baffle Anchor	10	Comes pre-installed in Solo Baffle Anchor panels (can be ordered separately for custom installations)
2631 1272	Connect Baffle Hook	10	Comes pre-installed in Solo Baffle Hook panels (can be ordered separately for custom installations)
2631 1768	Connect Guiding Pin	100	For use between Solo Baffle Anchor products to maintain visual gap between panels
2631 1770	Connect Profile Connector	50	For use when running multiple lengths of Connect Baffle Profile end-to-end
2630 0362	Connect Baffle Profile	20	For attaching Solo Baffle Anchor products to the structure
2647 4174	Connect Adjustable Wire Hanger Wire Length: 2000 mm	24	For hanging attachment of Solo panels to structure (6'-6" in length)
2647 4180	Connect Adjustable Wire Hanger Wire Length: 5000 mm	24	For hanging attachment of Solo panels to structure (16'-4" in length)
2630 0047	Baffle Wall Fixing	24	For attaching Solo Baffles directly to the wall (compatible with Solo Baffle Anchor only)

\*Connect Edge Sealant is available in all standard colors. Please contact your local Sales Representative or call 800-233-8990.

## ACOUSTICAL PERFORMANCE

CONFIGURATION	FREQUENCY (HZ)						AVE. SABINS/UNIT @ NRC FREQUENCIES
	125	250	500	1000	2000	4000	
1200 Baffle / 200	1.08	2.15	2.15	4.31	4.31	4.31	3.2
1200 Baffle / 300	2.15	3.23	2.15	4.31	4.31	4.31	3.5
1200 Baffle / 600	4.73	2.91	7.32	9.26	8.83	9.04	7.1
1800 Baffle / 200	1.08	4.31	4.31	6.46	6.46	6.46	5.4
1800 Baffle / 300	2.15	4.31	4.31	7.53	7.53	7.53	5.9
1800 Baffle / 600	4.31	4.31	7.53	10.76	9.69	9.69	8.1
Zig-Zag Baffle / 200-300	1.08	4.31	4.31	6.46	7.53	7.53	5.7
Zig-Zag Baffle / 300-600	3.23	5.38	6.46	9.69	9.69	9.69	7.8
Wave Baffle / 200-300	2.15	4.31	4.31	7.53	7.53	7.53	5.9
Wave Baffle / 300-600	3.23	5.38	6.46	9.69	9.69	9.69	7.8

## PHYSICAL DATA

**MATERIAL**  
Fiberglass

**ASTM E1264 CLASSIFICATION**  
Type XII, Form 2, Pattern G

**FIRE CLASS (ASTM E1264)**  
All are Class A per ASTM E84 & CAN S102  
Flame Spread: 25 or less  
Smoke Developed: 50 or less

**MAINTENANCE**  
Wipe with a soft cloth or vacuum with brush attachment. Cleanable with mild detergent.

**INSTALLATION CONSIDERATION**  
Calculations based on 600 mm spacing at NRC frequencies.

**MOLD/MILDEW RESISTANCE**  
Fiberglass substrate is inherently resistant to the growth of mold and mildew.

**WARRANTY**  
10-year Ecophon Warranty increases to 15 years when installed with CertainTeed suspension systems. Full warranty information can be found at [certainteed.com/warranty](http://certainteed.com/warranty).



### CertainTeed ARCHITECTURAL PRODUCTS

METAL • WOOD • FELT • FIBERGLASS & MINERAL FIBER • GYPSUM • SUSPENSION & INTEGRATED SYSTEMS  
2424 Lakeshore Rd. West, Mississauga, ON L5J 1K4 800-233-8990 [certainteed.ca/architectural](http://certainteed.ca/architectural)