

Anchor, Base Ply and Cap Sheet

Mechanically attach or fully adhere (self-adhered, torch, cold process or hot asphalt) to intersection of horizontal roof plane and curb. Proper attachment is defined by specific system, product selection and deck type.

Tape (Recommended)

Tape off desired edges for clean detail aesthetic.

Polyester Reinforcement Preparation (Recommended)

Prepare SmartFlash ONE Reinforcements prior to applying any resin. Cut 6" width SmartFlash ONE Reinforcement to appropriate lengths. Reinforcement shall be applied wherever a change in angle occurs (i.e. where field of roof meets base of vertical surface) and across any seams in the substrate. Reinforcement shall overlap 2" anywhere an overlap occurs.

First Waterproofing Coat

Using a paint brush, roller or trowel for resin application, apply approximately 30 mils of wet resin to the Cap Sheet

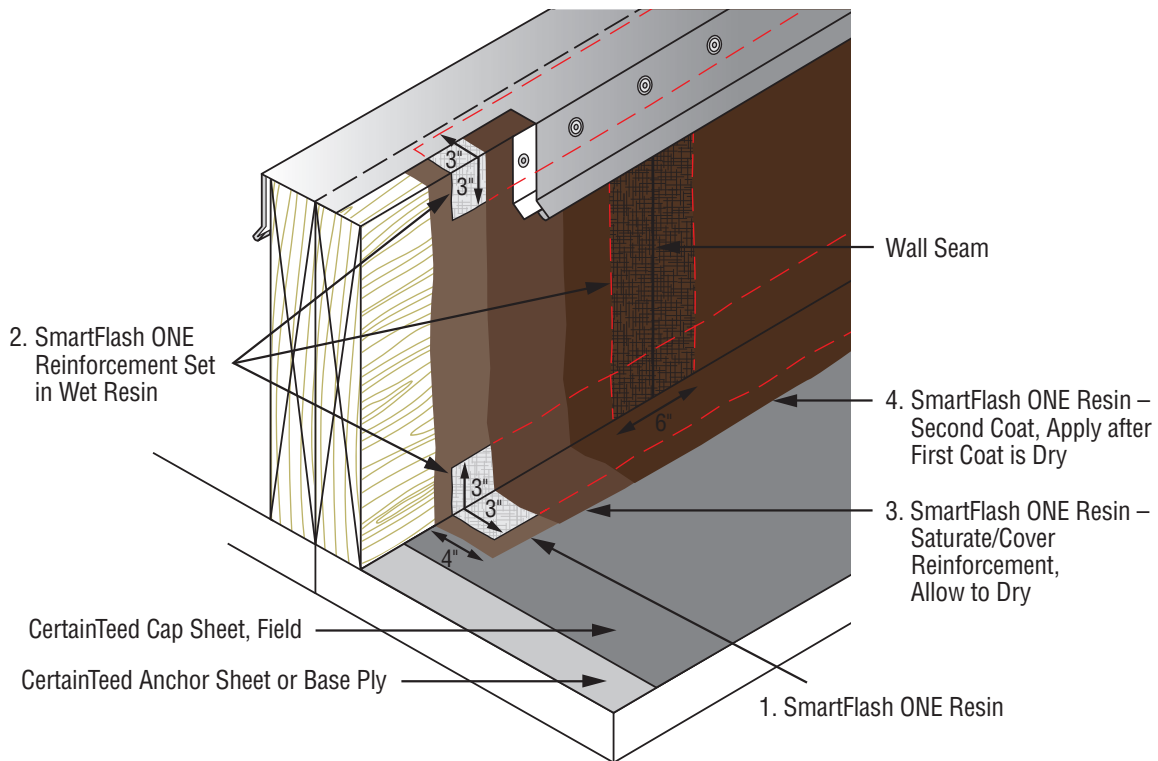
approximately 4" (100 mm) horizontally onto the field, vertically up the face of the divider, over the top surface of the divider, down the opposing vertical face and approximately 4" (100 mm horizontally onto the field. Immediately lightly press SmartFlash ONE Reinforcement into wet resin where field of roof meets base of vertical surface, along top edges of the divider and across any seams/breaks in material in the divider; saturate and coat Reinforcement with resin such that no Reinforcement is visible. Allow to dry 2-3 hours (assumes 70°F or 20°C).

Second Waterproofing Coat

Apply approximately 30 mils of wet resin to entire surface covered by first coat.

Granules (Optional)

If desired, broadcast granules into the second waterproofing coat before it forms a skin.



NOT DRAWN TO SCALE