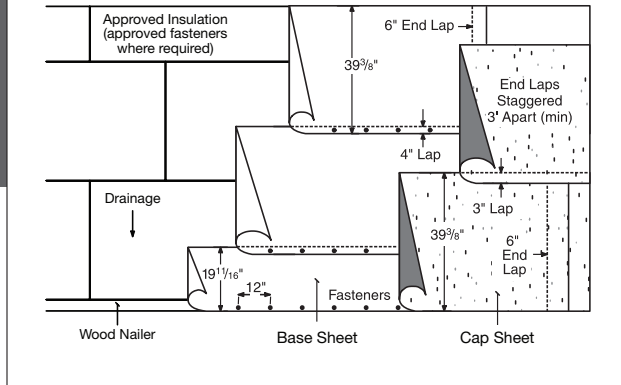


APP-IN-2-CF



Base sheet mechanically attached through insulated substrate with heat welded side laps and torch-welded APP modified cap

SUBSTRATE:

- Steel (Sec. 3.5)
- Wood (Sec. 3.10-3.11)
- Poured Gypsum (Sec. 3.12)
- Wood Fiber (Sec. 3.13)
- Insulation (Sec. 4.0)
- Re-cover (Sec. 5.0)

MAXIMUM SLOPE:

Up to 6" : 12" (Sec. 15.3)

ROOF ASSEMBLY:

One or more layers of approved insulation and approved gypsum coverboard:

- Base layer mechanically attached and additional layers mechanically attached or adhered in hot asphalt or approved adhesive.
- Base layer and additional layers adhered in hot asphalt or approved adhesive.
- Vapor retarder/anchor sheets (Sec. 4.7).

Approved base sheet mechanically attached to approved substrate with heat welded side laps (Sec. 15.4.3)

Approved cap sheet, torch-welded (Sec. 8.0).

SUMMARY OF MATERIALS:

- One or more layers of insulation and approved gypsum coverboard
- Base sheet (1 ply)
- Cap sheet (1 ply)

WARRANTY DURATIONS FOR THIS SPECIFICATION VARY BASED ON ROLL MATERIAL SELECTION; SEE WARRANTY MATRIX.

Applicable local building code may require more stringent installation requirements such as, but not limited to, increased fastener or adhesive densities to meet required wind uplift pressures. Consult local building code and uplift requirements prior to any application of CertainTeed roofing materials. CertainTeed is not responsible for failure to install roofing products per applicable local building codes.

APPROVED BASE SHEETS:

- Flintlastic Ultra Poly SMS

APPROVED CAP SHEETS:

(one of the following)

- Flintlastic GTA*
- Flintlastic GTA-FR*
- Flintlastic STA
- Flintlastic STA Plus

FINAL SURFACING:

For optional surfacing see Section 14.0.

Flintlastic STA and STA Plus (used as cap sheets) require reflective coating.

- FlintCoat A-300 or W (required over Flintlastic STA and STA Plus)

FLASHING ASSEMBLY:

- **Standard.** Over a base sheet or bonded to a primed substrate. One ply Flintlastic modified cap sheet, per CT detail.
- **Premium.** Over a base sheet or bonded to a primed substrate. One smooth and one granulated modified membrane flashing, per CT detail.
- **Premium Alternate.** Over a base sheet or bonded to a primed substrate. One smooth modified membrane and CT SmartFlash®, per CT detail.

Asphalt: Type III or Type IV (Sec. 7.0).

Cants: In angles of roof deck and vertical surfaces, the roofing contractor shall furnish and install an approved cant strip with a minimum 3" face.

* Available with CoolStar® reflective granules