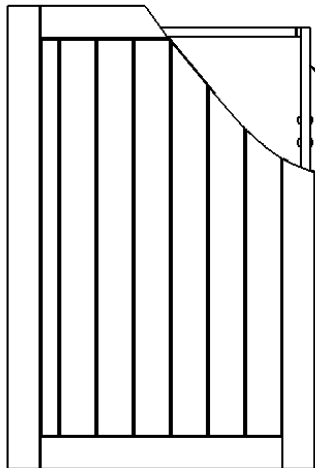
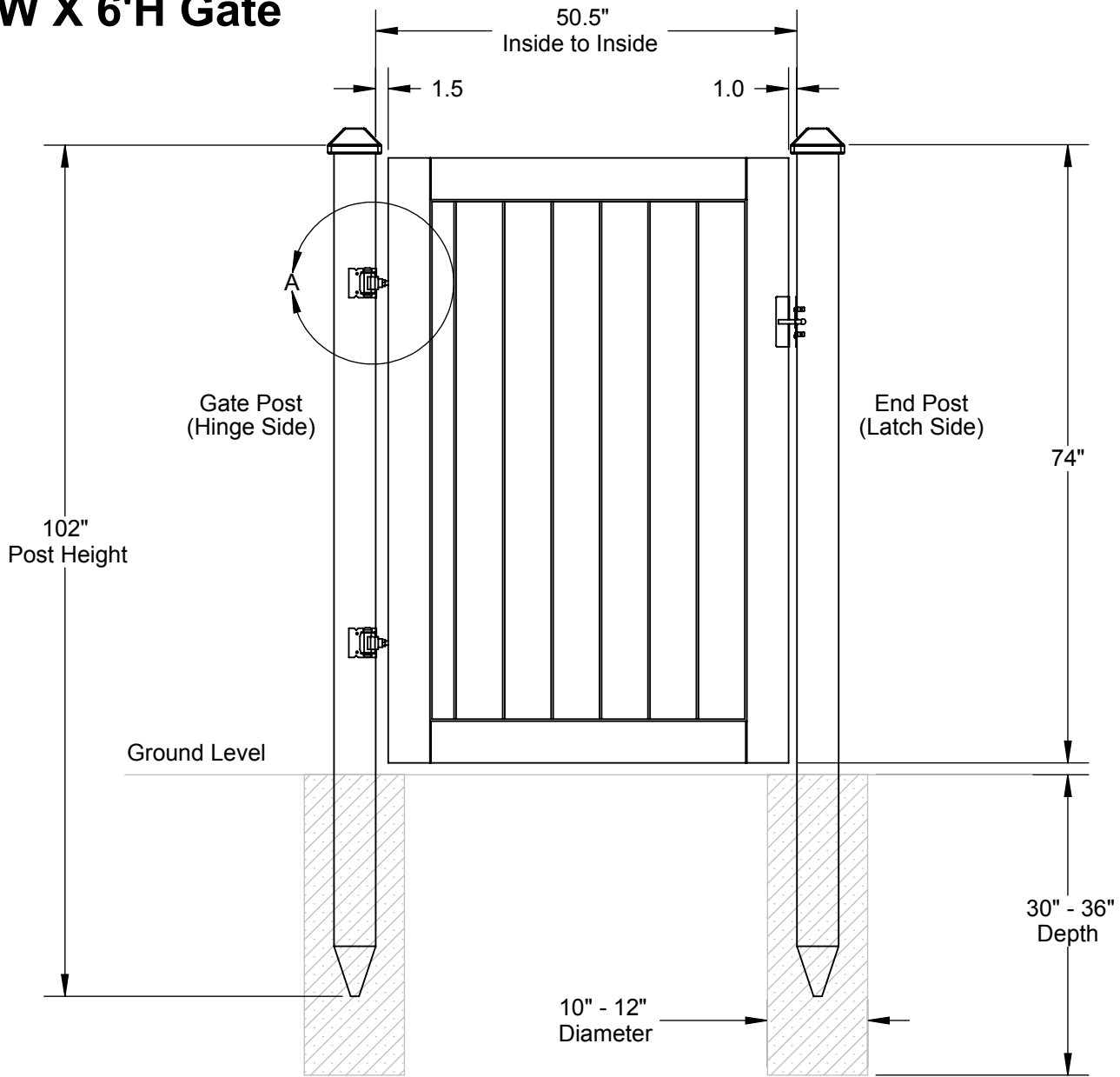
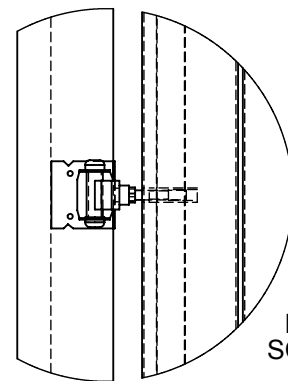


# 4'W X 6'H Gate




Gate is reinforced with a 1.5" galvanized steel box tube

- Actual Gate Dimensions 48.25"W X 70"H X 2"
- Gate Weight - 63.5 lbs.
- Tolerances are  $\pm .5"$



Gate hinge threads into the upper and lower inserts in the gate metal frame leaving about 1.5" from the edge of the gate to the post.

<p><b>4' Ashland Gate</b></p>	<p>This drawing may not be altered or reproduced without the permission of SimTek Fence</p>		 <p><b>SimTek</b> FENCE</p> <p>www.simtekfence.com</p>
<p><b>Date: Nov. 2016</b></p>	<p>Scale: not to scale</p>	<p>REV: JC</p>	
<p><b>Sheet 1 of 1</b></p>	<p><b>U.S. Patents: 7,478,797 / 7,635,114 Foreign Patents Pending</b></p>		