

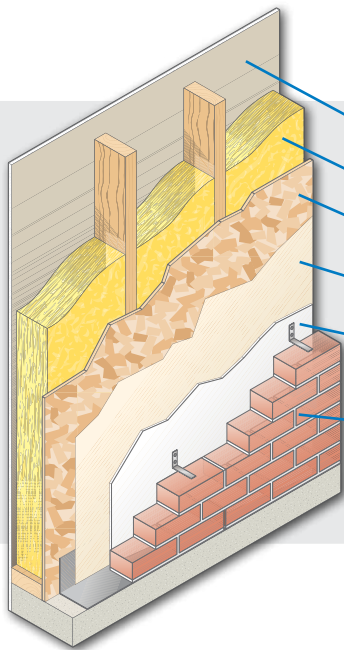
MEMBRAIN™

Continuous Air Barrier & Smart Vapor Retarder

Hidden Moisture Issues in Walls Can Lead to Building Failures and Callbacks

Are you creating a “moisture sandwich” within your walls?

Many areas of the country are beginning to install exterior insulation. While this helps to increase a wall's R-value, decrease thermal bridging and reduce the wall's permeance level, it can also lead to moisture trapped within the walls. Popular cladding products like brick, stucco and fiber cement hold moisture, which can increase moisture buildup in your walls.



Vapor permeance ratings

Any material with a perm rating of 1 or below is considered a vapor retarder:

Drywall (depending on paint)	→	3 – 35 perms
Unfaced batts with poly	→	≤ 0.1 perm
OSB sheathing	→	Approximately 2 perms
Housewrap (water-resistive barrier)	→	5 – 50 perms
Continuous extruded polystyrene insulation (XPS)	→	≤ 1 perm
Moisture-retentive cladding (fiber cement/brick/stucco)	→	Vapor permeable/ moisture retentive

Isn't poly good enough?

Polyethylene rolled sheet goods are commonly used as a vapor retarder. While these products may successfully keep moisture out of the wall cavity in the cold season, poly remains closed in all temperature environments, trapping moisture during the summer season when humidity is driving outward, which can lead to structural damage and potential mold growth.

You have just
CREATED a
**moisture
sandwich**

Moisture will get trapped in the wall between the XPS foam board (on the exterior) and poly (on the interior) with no ability to dry.

How do I **PROTECT** my business?

Protect your business

To minimize moisture issues and building failure callbacks, you need a solution that will not only meet the new building code requirements, but also adapt to the variances in humidity to keep wall cavities dry and protect against mold and mildew.

MOISTURESENSE™ TECHNOLOGY

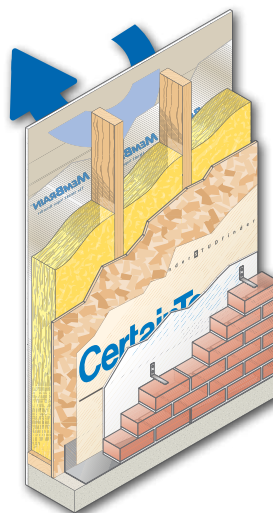
MemBrain™, the Continuous Air Barrier and Smart Vapor Retarder, is a patented smart vapor retarder with MoistureSense™ Technology that helps provide superior moisture management needed in an airtight envelope.

MemBrain adapts its permeability based on the humidity level to keep wall cavities dry

- ✓ Prevents moisture vapor from entering the cavity in the winter
- ✓ Allows moisture buildup to escape the cavity in the summer
- ✓ Provides a greater performance and perm rating compared to traditional kraft insulation or polyethylene sheeting
- ✓ Easy to handle; installs like traditional poly

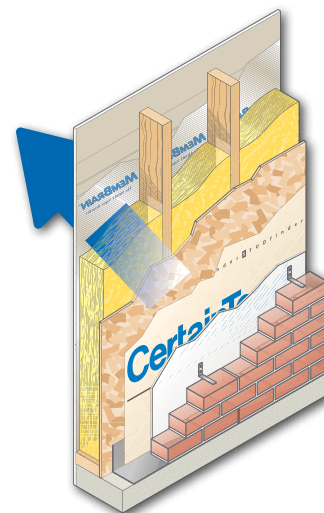
BLOCKS AND BREATHES

LOW HUMIDITY



Remains moisture tight in winter when humidity in the cavity is low.

HIGH HUMIDITY



Increases permeability in summer to let moisture escape when needed.

Learn more at www.certainteed.com/membrain

ASK ABOUT ALL OF OUR OTHER CERTAINTEED® PRODUCTS AND SYSTEMS:

ROOFING • SIDING • TRIM • DECKING • RAILING • FENCE
GYPSUM • CEILINGS • INSULATION

www.certainteed.com/insulation <http://blog.certainteed.com>

CertainTeed Corporation
P.O. Box 860
Valley Forge, PA 19482

Professional: 800-233-8990
Consumer: 800-782-8777