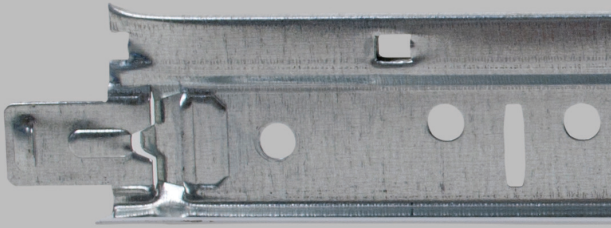
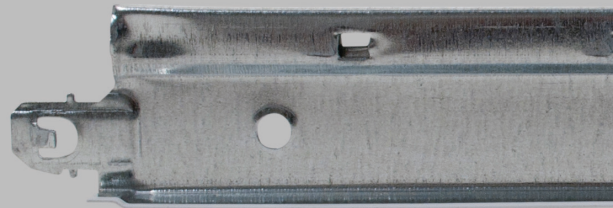


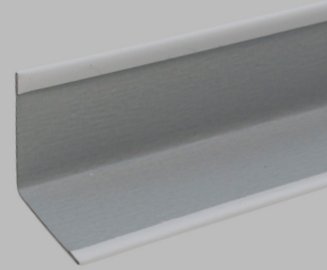
MAIN RUNNER



CROSS TEE



7/8" WALL ANGLE

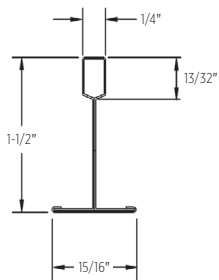


Code compliance with simple installation. Suited for certain UL/ULC fire-rated designs.

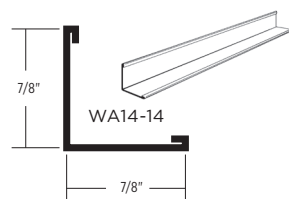
FEATURES AND BENEFITS

- The FireSecure and Protectone® ceiling assembly offers fire-rated solutions for 2' x 2' and 2' x 4' modules
- Tested in accordance with ASTM E119 for certain time-rated, fire-resistive assemblies
- FireSecure and Protectone suspended ceiling designs have been tested and are listed at UL.com and certainteed.com/architectural
- Suitable for use in the following UL/ULC Fire Resistive Assemblies: D203, D205, G208, G218, G248, G255, I210, I211, L201, P204, P259, P260, P261, P264, P266, R224
- Suited for seismic categories A-C
- High recycled content

MAIN RUNNER



WALL ANGLE



LEED® v4

RECYCLED CONTENT

up to 86%

- ✓ MR: PBT Source Reduction (Healthcare)
- ✓ MR: Material Ingredients (HPDs)
- ✓ EQ: Low-Emitting Material
- ✓ MR: Sourcing Raw Materials
- ✓ MR: Environmental Product Declaration (EPDs)
- ✓ MR: Construction and Demolition Waste Management Planning

LEED® is a registered trademark of the U.S. Green Building Council.

CERTIFICATIONS & PRODUCT DECLARATIONS



EPD AVAILABLE

HPD AVAILABLE

DeclareSM
Living Building Challenge Red List Free[®]

15/16" FIRESECURE™ STAB SYSTEM

	GRID FACE (IN.)	DIMENSIONS (IN.)	SLOT SPACING (IN.)	PIECES/CARTON	FT./CARTON	SEISMIC DESIGN CATEGORY	STRUCTURAL CLASSIFICATION (ASTM C635)	RECYCLED CONTENT PRE*	RECYCLED CONTENT POST*	RECYCLED CONTENT TOTAL*	ALLOWABLE UNIFORM LOAD (PLF)	ALLOWABLE CONCENTRATED LOAD AT MIDSPAN (LBF)**
MAIN RUNNERS												
FSS-12-12-15	15/16	144 x 1-1/2 x 15/16	6 O.C.	20	240	A-C	ID	19%	69%	88%	13.35	33.75
CROSS TEE												
FSS-2-12-15	15/16	24 x 1-1/2 x 15/16	—	60	120	—	—	19%	69%	88%	44.0	55.01
FSS-4-12-15	15/16	48 x 1-1/2 x 15/16	12 O.C.	60	240	—	—	19%	69%	88%	10.28*	25.71
WALL ANGLE												
WA14-14	7/8	144 x 7/8 x 7/8	—	40	480	—	—	19%	69%	88%	—	—

*Maximum recycled content percentage. Recycled content varies by manufacturing location.

**Allowable concentrated loads at midspan are determined in accordance with AC308 Section 3.2. For each framing member, the allowable concentrated load must not be combined with the allowable uniform load.

MAXIMUM FIXTURE WEIGHT

ITEM NUMBER	CONFIGURATION		FIXTURE		HANGER SPACING		MAXIMUM WEIGHT	
	A	B	A	B	A	B	A	B
Main Runner to Main Runner – Drawing Key: Main Runner () Cross tee (---) Hanger wire (+)								
FSS4-12-15			24" x 48"	24" x 48"	48"	48"	56.00 lbs.	51.00 lbs.
FSS4-12-15			24" x 48"	24" x 48"	48"	48"	54.00 lbs.	41.50 lbs.
FSS4-12-15			24" x 24"	24" x 24"	48"	48"	26.00 lbs.	34.50 lbs.

Cross tees tested as follows: FSS4-12-15 tested at 10.28 lbs/LF to 1/360 of 4' span.

ACCESSORIES

	ITEM NUMBER	PRODUCT NAME	DIMENSIONS L" X W" X H" (MM)	COLOR	PIECES/CARTON	LBS./CARTON	
SEISMIC		SLEEVE1516	15/16" Sleeve	4 x 15/16 x 1/64 (102 x 24 x 1)	White	100	1.25
		CTSPC-2	Seismic Perimeter Clip	3-1/16 x 2-1/4 x 1-1/16 (78 x 58 x 27)	Metal	100	9
		CTSTJ	Seismic Transition Joint Clip	3-1/2 x 3-1/2 x 1-3/16 (89 x 89 x 31)	Metal	100	10
STANDARD		AHD	Adjustable Hold Down Clip	1-1/8 x 1/2 x 1-11/16 (29 x 13 x 43)	Black	1000	16
		OC15-1	Outside Corner Cap 15/16" (24 mm)	2-1/4 x 2-1/4 x 1/64 (58 x 58 x 1)	White	100	3
		IC15-1	Inside Corner Cap 15/16" (24 mm)	2-1/4 x 2-1/4 x 1/64 (58 x 58 x 1)	White	100	3
		HW12	Hanger Wire 12' (3660 mm) 12 Gage (2.05 mm)	144 x 12 gage x 12 gage (3658 x 12 gage x 12 gage)	Metal	141	50
		DLC	Direct Load Clip	1-1/8 x 3-1/16 x 1/16 (29 x 78 x 2)	Metal	150	9
	SFYK	SmartFit Yoke	8.55 x 1.25 x 9.56 (217 x 32 x 243)	Metal	20	9	

15/16" FIRESECURE™ STAB SYSTEM

PHYSICAL DATA

MATERIAL

Hot dipped galvanized steel (G30)

FACE DIMENSION

15/16"

CROSS TEE/MAIN RUNNER INTERFACE

Stepped-end, Override

DUTY CLASSIFICATION

Intermediate duty per ASTM C635

SURFACE FINISH

Painted Steel Cap

PROFILE HEIGHT

1-1/2"

VOC EMISSIONS

Independently certified compliant with California Department of Public Health CDPH/EHLB/Standard Method Version 1.2, 2017.

END DETAIL

Main Runner: Integral Stab
Cross Tee: Integral Stab

SEISMIC CATEGORY

A, B, C

WARRANTY

10-year Limited Suspension Systems warranty increases to 15 years when installed with CertainTeed Ceiling Panels. Full warranty information can be found at certainteed.com/warranty.

SEISMIC PERFORMANCE

MAIN RUNNERS:

All main runners

MINIMUM LBS. TO PULLOUT

COMPRESSION/TENSION:

60 lbs.

CROSS TEES:

All cross tees

ICC EVALUATION SERVICE, INC., REPORT COMPLIANCE

Suspension systems manufactured by CertainTeed ceilings have been reviewed and are approved by listing in ICC-ES Evaluation Report ESR-3336. CertainTeed suspension systems have been reviewed and are approved by listing in the City of Los Angeles Building Code ESR-3336 LABC Supplement. Evaluation Reports are subject to reexamination, revision and possible cancellation. Refer to certainteed.com/architectural for current reports.



CertainTeed ARCHITECTURAL

METAL • WOOD • FELT • FIBERGLASS & MINERAL FIBER • GYPSUM • SUSPENSION & INTEGRATED SYSTEMS
20 Moores Road, Malvern, PA 19355 800-366-4327 certainteed.com/architectural

© 10/22 CertainTeed, Printed in the USA, Code No. 11-11-149-US-EN