

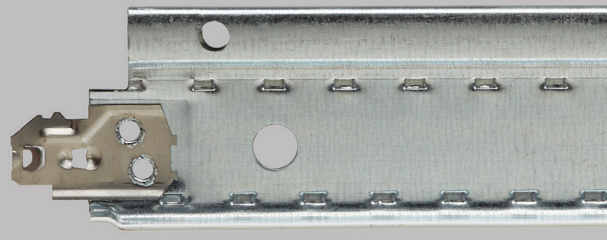
15/16" EZ STAB CLASSIC ALUMINUM CAPPED SYSTEM

CEILINGS & WALLS ACOUSTICAL SUSPENSION SYSTEMS

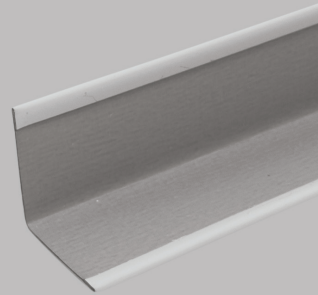
MAIN RUNNER



CROSS TEE



7/8" WALL ANGLE

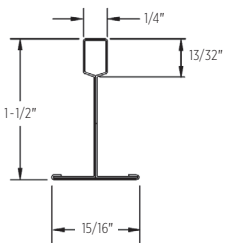


The EZ Stab Classic Aluminum Capped System is for areas where moisture is a concern, such as commercial kitchens, laboratories and sanitary spaces.

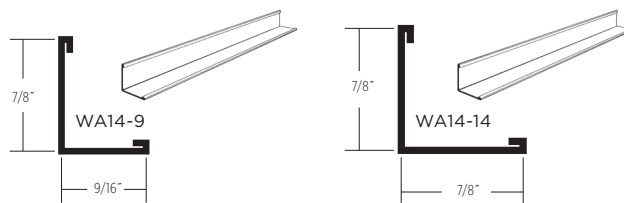
FEATURES AND BENEFITS

- Increased frequency (3" O.C.) of patented Latitude Holes™ provides installation flexibility
- EZ Stab clip technology allows for a fast and strong connection on cross tees with enhanced removability
- Enhanced stitching increases stiffness, reducing bending or twisting
- Grid features G30 hot-dipped galvanized steel web construction for corrosion resistance
- Suitable for all seismic applications
- Satisfies USDA/FSIS guidelines for sanitary applications
- ICC certified (ESR-3336) and City of Los Angeles Building Code compliant via ESR-3336 LABC Supplement
- Available in Standard White and Black. Additional color options are offered through our Post-Paint process. See the Visual Options - Suspension Systems page for color option details.

MAIN RUNNER



WALL ANGLE



LEED® v4

RECYCLED CONTENT

up to 86%

- ✓ MR: PBT Source Reduction (Healthcare)
- ✓ MR: Material Ingredients (HPDs)
- ✓ EQ: Low-Emitting Material
- ✓ MR: Sourcing Raw Materials
- ✓ MR: Environmental Product Declaration (EPDs)
- ✓ MR: Construction and Demolition Waste Management Planning

LEED® is a registered trademark of the U.S. Green Building Council.

CERTIFICATIONS & PRODUCT DECLARATIONS



EPD AVAILABLE

HPD AVAILABLE

DeclareSM

Living Building Challenge Red List Free[®]

ARCHITECTURAL

CertainTeed
SAINT-GOBAIN

15/16" EZ STAB CLASSIC ALUMINUM CAPPED SYSTEM

	GRID FACE (IN.)	DIMENSIONS (IN.)	SLOT SPACING (IN.)	PIECES/CARTON	FT./CARTON	SEISMIC DESIGN CATEGORY	STRUCTURAL CLASSIFICATION (ASTM C635)	RECYCLED CONTENT PRE*	RECYCLED CONTENT POST*	RECYCLED CONTENT TOTAL*	ALLOWABLE UNIFORM LOAD (PLF)	ALLOWABLE CONCENTRATED LOAD AT MIDSPAN (LBF)**
MAIN RUNNERS												
EZACS12-12-15	15/16	144 x 1-1/2 x 15/16	6 O.C.	20	240	A-C	ID	25%	32%	57%	12.05	30.13
EZACS12-12-20	15/16	144 x 1-1/2 x 15/16	6 O.C.	20	240	A-F	HD	25%	32%	57%	16.7	41.72
CROSS TEE												
EZACS2-12-12	15/16	24 x 1-1/2 x 15/16	—	60	120	—	—	25%	33%	58%	36.14	45.18
EZACS4-12-12	15/16	48 x 1-1/2 x 15/16	12 O.C.	60	240	—	—	25%	33%	58%	8.98	22.44
WALL ANGLE												
WA14-14SAL (Aluminum)	7/8	144 x 7/8 x 7/8	—	40	480	—	—	9%	44%	53%	—	—
WA14-14	7/8	144 x 7/8 x 7/8	—	40	480	—	—	19%	69%	88%	—	—

*Maximum recycled content percentage. Recycled content varies by manufacturing location.

**Allowable concentrated loads at midspan are determined in accordance with ACS368 Section 3.2. For each framing member, the allowable concentrated load must not be combined with the allowable uniform load.

To specify color other than white, order by item number followed by color code. Example: EZACS12-12-15 BLK. Color List: Black - BLK, Beige Breeze - BEB, Blondewood - BLW, Silver Lining - SIL, Wet Clay - WEC, White Wash - WIW.

MAXIMUM FIXTURE WEIGHT

ITEM NUMBER	CONFIGURATION		FIXTURE		HANGER SPACING		MAXIMUM WEIGHT	
	A	B	A	B	A	B	A	B
Main Runner to Main Runner – Drawing Key: Main Runner () Cross tee (—) Hanger wire (+)								
EZACS4-12-12			24" x 48"	24" x 48"	48"	48"	56.00 lbs.	51.00 lbs.
EZACS4-12-12			24" x 48"	24" x 48"	48"	48"	44.50 lbs.	34.50 lbs.
EZACS4-12-12			24" x 24"	24" x 24"	48"	48"	21.50 lbs.	28.50 lbs.

Cross tee tested as follows: EZACS4-12-12 tested at 8.98 lbs/LF to 1/360 of 4' span.

ACCESSORIES

	ITEM NUMBER	PRODUCT NAME	DIMENSIONS L" X W" X H" (MM)	COLOR	PIECES/CARTON	LBS./CARTON
SEISMIC	SLEEVE1516	15/16" Sleeve	4 x 15/16 x 1/64 (102 x 24 x 1)	White	100	1.25
	CTSPC-2	Seismic Perimeter Clip	3-1/16 x 2-1/4 x 1-1/16 (78 x 58 x 27)	Metal	100	9
	CTSTJ	Seismic Transition Joint Clip	3-1/2 x 3-1/2 x 1-3/16 (89 x 89 x 31)	Metal	100	10
STANDARD	AHD	Adjustable Hold Down Clip	1-1/8 x 1/2 x 1-11/16 (29 x 13 x 43)	Black	1000	16
	OC15-1	Outside Corner Cap 15/16" (24 mm)	2-1/4 x 2-1/4 x 1/64 (58 x 58 x 1)	White	100	3
	IC15-1	Inside Corner Cap 15/16" (24 mm)	2-1/4 x 2-1/4 x 1/64 (58 x 58 x 1)	White	100	3
	HW12	Hanger Wire 12' (3660 mm) 12 Gage (2.05 mm)	144 x 12 gage x 12 gage (3658 x 12 gage x 12 gage)	Metal	141	50
	DLC	Direct Load Clip	1-1/8 x 3-1/16 x 1/16 (29 x 78 x 2)	Metal	150	9
	EZSLOTTER	Slot Punch	11 x 3-1/4 x 1 (280 x 83 x 26)	Metal	1	2.5
SFYK	SmartFit Yoke	8.55 x 1.25 x 9.56 (217 x 32 x 243)	Metal	20	9	

15/16" EZ STAB CLASSIC ALUMINUM CAPPED SYSTEM

PHYSICAL DATA

MATERIAL

Hot dipped galvanized steel (G30)

FACE DIMENSION

15/16"

CROSS TEE/MAIN RUNNER INTERFACE

Stepped-end/Override

DUTY CLASSIFICATION

Heavy duty and Intermediate duty per ASTM C635

SURFACE FINISH

Painted Steel Cap

PROFILE HEIGHT

1-1/2"

VOC EMISSIONS

Independently certified compliant with California Department of Public Health CDPH/EHLB/Standard Method Version 1.2, 2017.

END DETAIL

Main Runner: Integral Stab
Cross Tee: Staked-on Stab Clip

SEISMIC CATEGORY

A, B, C, D, E, F

WARRANTY

10-year Limited Suspension Systems warranty increases to 15 years when installed with CertainTeed Ceiling Panels. Full warranty information can be found at certainteed.com/warranty.

SEISMIC PERFORMANCE

MAIN RUNNERS:

All main runners

MINIMUM LBS. TO PULLOUT

COMPRESSION/TENSION:

180 lbs.

CROSS TEES:

All cross tees

ICC EVALUATION SERVICE, INC., REPORT COMPLIANCE

Suspension systems manufactured by CertainTeed ceilings have been reviewed and are approved by listing in ICC-ES Evaluation Report ESR-3336. CertainTeed suspension systems have been reviewed and are approved by listing in the City of Los Angeles Building Code ESR-3336 LABC Supplement. Evaluation Reports are subject to reexamination, revision and possible cancellation. Refer to certainteed.com/architectural for current reports.



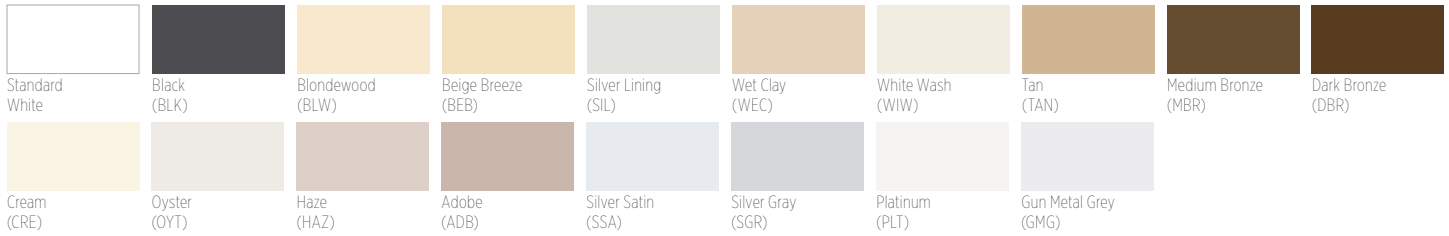
15/16" EZ STAB CLASSIC ALUMINUM CAPPED SYSTEM

VISUAL OPTIONS – SUSPENSION SYSTEMS

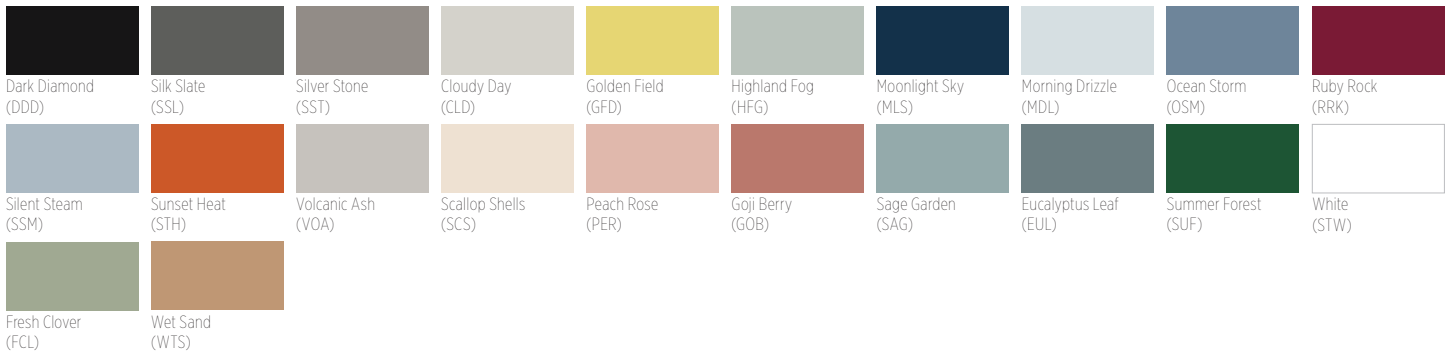
ACOUSTICAL AND DRYWALL SUSPENSION SYSTEMS AND TERMINUS TRIM

Our newly expanded post-paint process allows for any CertainTeed Suspension System product to be painted in a variety of new colors, matching all CertainTeed colors along with any Sherwin-Williams® colors requested by the customer. We can also match any color if a color sample is provided.

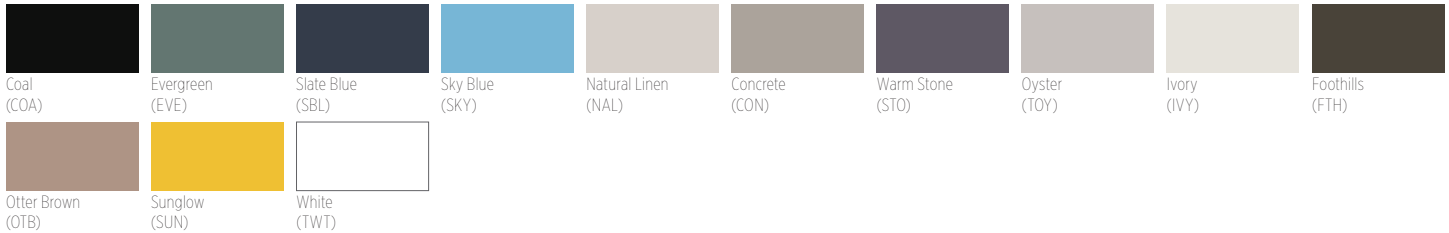
CERTAINTEED STANDARD



ECOPHON®



TECHSTYLE COLOR



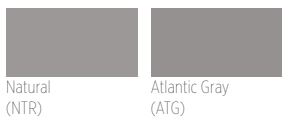
TECHSTYLE WOOD



TECHSTYLE FELT



METAL CEILINGS



For Special color options, contact your local sales representative.

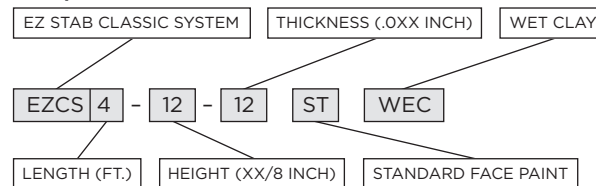
The colors shown have been reproduced with all the fidelity possible with commercial printing processes. Also, a specific color may appear different on one class of product than another.

When placing an order for either Standard or Special colors, please use the following naming process preceding each catalog code:

Standard face paint: ST + 3-letter color code
 Standard 360 paint: 3T + 3-letter color code
 Special face page: SP + 3-letter color code
 Special 360 paint: 3P + 3-letter color code

Example:
EZCS4-12-12 ST WEC

Example: EZCS4-12-12 ST WEC



CertainTeed ARCHITECTURAL

METAL • WOOD • FELT • FIBERGLASS & MINERAL FIBER • GYPSUM • SUSPENSION & INTEGRATED SYSTEMS
 20 Moores Road, Malvern, PA 19355 800-366-4327 certainteed.com/architectural