

CertainTeed  
SAINT-GOBAIN

CertainTeed Solar  
SOLSTICE<sup>®</sup>  
PHOTOVOLTAIC  
SYSTEM



## CertainTeed Solar SOLSTICE®

### WHAT'S INCLUDED

- 1 PV Modules  
*Converts sunlight to DC power*
- 2 Mounting System  
*Attaches the solar modules to the building structure*
- 3 Flashing  
*Waterproofs the mounting penetrations*
- 4 Inverters or Microinverters  
*Converts DC to AC power & manages the operation of the system*
- 5 System Monitoring & Data Reporting (Optional)  
*Provides data on system production and operational status*

### THE CERTAINTEED SOLAR ADVANTAGE

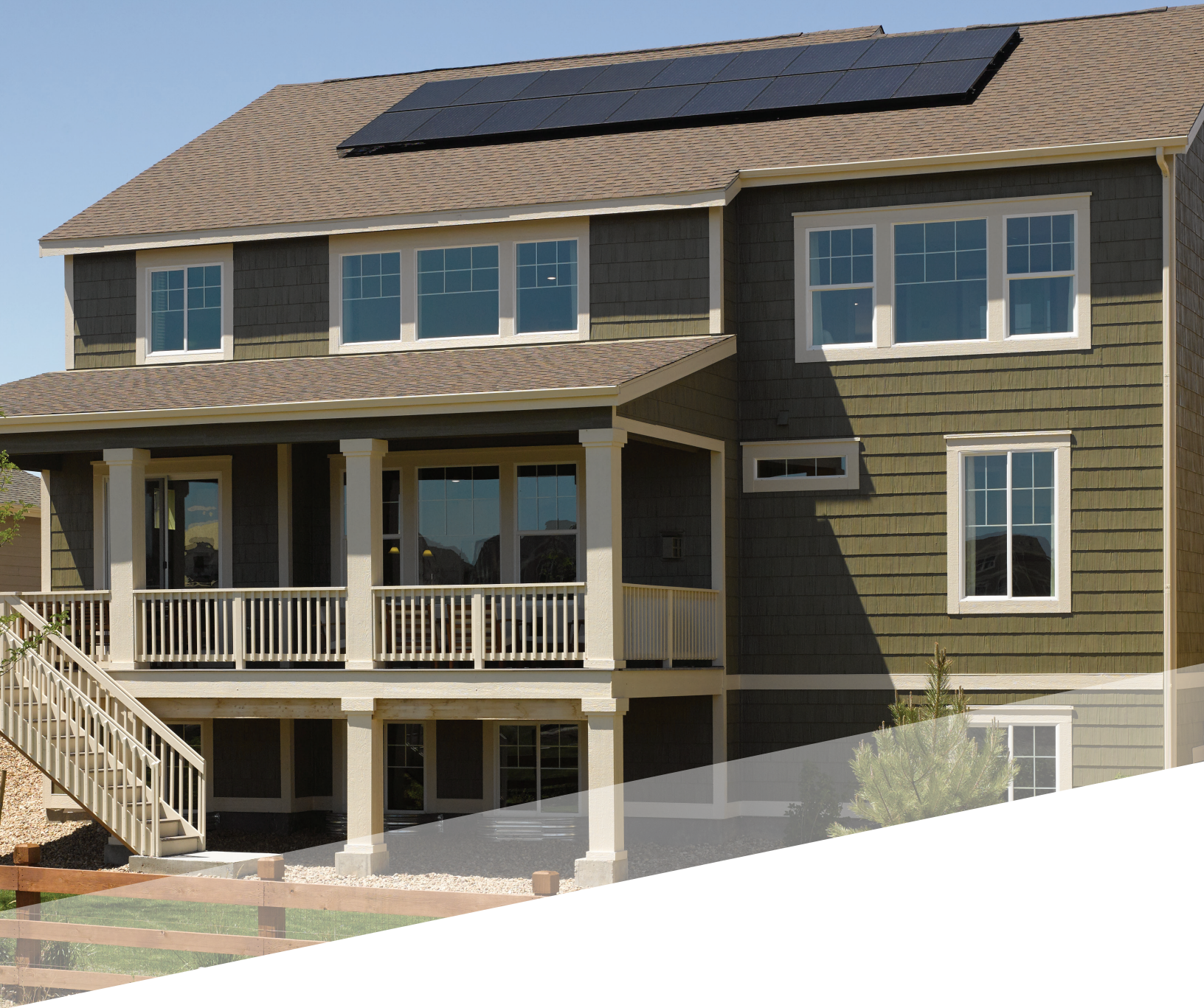
- ✓ High-quality components selected by CertainTeed
- ✓ Single-source warranty for all major system components
- ✓ End-to-end coverage for both the products and their professional installation when working with a CertainTeed Solar Installer, even if the installer who provided your service is no longer in business
- ✓ Full rooftop warranty coverage when combined with a new or existing CertainTeed asphalt shingle roofing system

### WORKING WITH A CERTAINTEED SOLAR INSTALLER

- ✓ CertainTeed Solar Installers are experts in their field. Their quality, attention to detail and professionalism allows them to offer CertainTeed's installation workmanship warranty for up to 25 years
- ✓ There's no additional cost for CertainTeed Solar's comprehensive workmanship warranty when your system is installed by a CertainTeed Solar Installer

CertainTeed's Solstice® photovoltaic system is where smart design and operational excellence converge. The same depth of knowledge and rigorous standards that make our roofing and building systems best-in-class also apply to each Solstice component. This is why we confidently back our Solstice systems with the best warranty in the industry.

Locate a CertainTeed Solar Installer at:  
[www.certainteed.com/find-a-pro](http://www.certainteed.com/find-a-pro)



learn more at: [certainteed.com/solar](https://certainteed.com/solar)



**CertainTeed Corporation**

**ROOFING • SIDING • TRIM • DECKING • RAILING • FENCE • GYPSUM • CEILINGS • INSULATION**

20 Moores Road Malvern, Pa 19355 Professional: 800-233-8990 Consumer: 800-782-8777 [certainteed.com](https://certainteed.com)

© 10/17 CertainTeed Corporation, Printed in the USA, Code No. PV-01-012